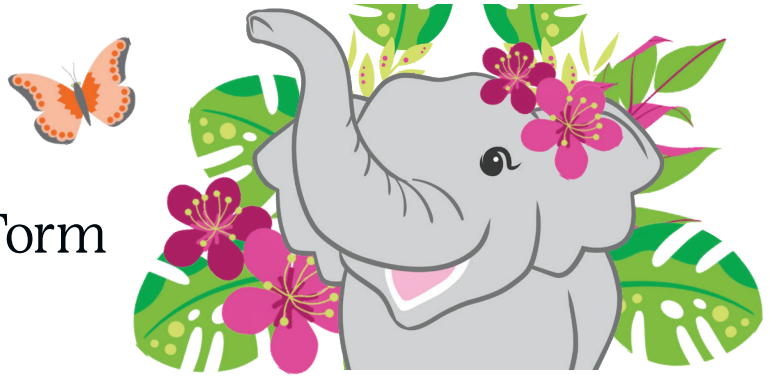


2024 Sweets & Treats Program Family Guide and Permission Form August 28 – October 15, 2024



Dear Girl Scout Family:

Welcome to the 2024 Girl Scouts of Southeast Florida Sweets & Treats Program! This year's theme is **"Embrace Possibility"**.

The council's Sweets & Treats Program is a great way for your Girl Scout to learn valuable teamwork, goal setting, and confidence-building skills. The program is intended to reach family, friends, teachers, and neighbors, and will help your troop earn money for activities throughout the year. This guide, along with helpful information from your Troop Leader and Troop Sweets & Treats Program Manager, will provide you and your Girl Scout with the tools for a successful sale. *There are several easy ways for your Girl Scout to participate this year:*



Nut and Candy Orders

Nut and candy items can be ordered in two ways - through the paper order card when reaching out to local friends and family OR online with an option for customers to pay with a credit card and either have it shipped directly to them, or *have it delivered by your Girl Scout to avoid any shipping fees!* We have 16 delicious items featured on the paper order card with additional yummy items available only online. We also have **two NEW items** added to the order card this year!



Magazine and More Orders *(includes Tervis and BarkBox)*

Girls are encouraged to reach out to family and friends to support their sale by ordering or renewing magazine subscriptions online. A simple program will help you enter email addresses and create custom emails that can be sent quickly and easily. **NEW this year**—extended BarkBox lineup!



Coupon Books

We are offering SaveAround coupon books filled with tons of discounts in your area. We have four books for all the counties our council covers plus Orlando; with all the savings, the book pays for itself several times. Buy one and see!



Community Care to Share Program

Girls can earn their Care to Share patch by supporting community heroes of their choosing. Girls will have the option to sell a pre-set care package for \$25 that their customers can purchase. At the end of the sale, they will be responsible for packaging and delivering the donations.

Talk with your Girl Scout and help her identify and approach family and friends with the opportunity to purchase delicious nuts and candy, subscribe or renew subscriptions to their favorite magazines, try new product offerings, and to start saving with SaveAround coupon books. These items also make wonderful holiday gifts. Remember, in addition to earning money for your troop, your Girl Scout can earn rewards for herself!

Review this guide for more details to help her
embrace possibility and reach her goals!

Yours in Girl Scouting,

Lisa Y. Johnson, MBA, APR
GSSEF CEO



Important Dates for Families

| | |
|---------------------|---|
| August 28 | Online site opens and in-person order taking begins |
| October 13 | Girl Orders due to Troop Leader |
| October 15 | Sweets & Treats Program ends |
| _____ | Delivery of product by Troop Leader |
| _____ | Final money & reports due to Troop Leader |
| Nov-Dec 2024 | Rewards distributed |

Participation Guide for Families

Magazines and more, nuts, candy, and coupon books are offered through our Sweets & Treats Program. Use this guide to explore the different ways your Girl Scout can get involved. Participate in all the program options or choose what works for you. Remember that only Girl Scouts registered for the 2024-2025 Girl Scout Year will be eligible to participate and receive the fun rewards and benefits of this Sweets & Treats Program!

Option One – Online Nut and Candy

Online nut and candy sales are an easy way to jump start your program and earn great rewards. Customers pay for nut or candy orders online with a credit card and the product is shipped to the customer directly OR delivered by you if it's a local order.

1. Starting August 23, look for the welcome email from M2Media providing you with access to the online sales site (M2OS) for the Sweets & Treats Program. *If you don't receive this welcome email, contact your Troop Leader for assistance or visit www.gsnutsandmags.com/gssef to register directly.*
2. Complete the simple registration process and follow the steps to enter email addresses. Enter as many as you would like. *If your Girl Scout sends at least 20 emails, she will earn a special patch.*
3. All online sales are automatically recorded in M2OS throughout the program and count towards rewards.

Option Two – Nut and Candy Paper Order Card

There are 16 great items and the Community Care to Share program on our paper order card this year including a new holiday tin and a new Girl Scout tin. Nut and candy items range from \$8-\$15. Customers pay when the products are delivered.

1. Use the paper order card to take orders **beginning August 28**. Turn orders into your Troop Leader **on or before October 13**. Do not collect payment until you deliver the product.
2. Your Troop Leader will receive orders in early November and will let you know when they are available for pick-up.
3. Deliver nut and candy items and collect payment.
4. Turn in all money to your Troop Leader ASAP. Troops must have all money in the troop bank account **by Nov. 15**.

Troop Proceeds

No matter how you choose to sell, your troop will earn some awesome proceeds AND each item sold will still count towards your individual rewards! Troop proceeds include:

- \$1.25 for every nut or candy item sold
- \$7.00 for every coupon book sold
- 12% of the sales price for every magazine subscription and BarkBox or Tervis item purchased
- \$4.00 for every Community Care to Share package sold



Option Three – SaveAround Coupon Books

The SaveAround coupon book is filled with money saving deals for local restaurants and businesses. Purchase your local coupon book or choose from three neighboring areas for your travels. We offer books for Broward, Palm Beach, Treasure Coast and Orlando!

1. Use the paper order card to collect orders **beginning August 28**. Turn orders into your Troop Leader **on or before October 13**. Do not collect payment until you deliver the product—be sure to tell your Troop Leader which market(s) your customers have requested.
2. Your Troop Leader will receive orders in early November and will let you know when they are available for pick-up.
3. Deliver coupon books and collect payment.
4. Turn in all money to your Troop Leader ASAP.

Option Four – Online Magazines and More

Online magazine sales and renewals, plus new offerings from BarkBox and Tervis, are an easy way to jump start your program and earn great rewards. Customers pay for their order with a credit card and start receiving items within 6-8 weeks from M2Media.

1. Starting August 23, look for the welcome email from M2Media providing you with access to the online sales site (M2OS) for the Sweets & Treats Program. If you don't receive this welcome email by August 28, contact your Troop Leader for assistance or visit www.gsnutsandmags.com/gssef to register directly.
2. Complete the simple registration process and follow the steps to enter email addresses. Enter as many as you would like. *If your Girl Scout sends at least 20 emails, she will earn a special patch.*
3. All online sales are automatically recorded in M2OS throughout the program and count towards rewards.

Troop Opt Out Option* (Junior – Ambassador only)

Junior level Girl Scouts and higher may choose to opt out of Girl Rewards and earn more funds. It must be a troop decision and applies to all the girls in the troop. Opt out deadline is Oct. 16. Opt out troops will earn the following:

- \$1.35 per nut and candy item sold
- \$7.50 per SaveAround coupon book sold
- 13% of the sales price per magazine subscription and BarkBox or Tervis item purchased
- \$4.00 for every Community Care to Share package sold

*Girls will still receive all of the patches they earn.

Taking Payment for Sweets & Treats

- Payments for order card nuts, candy, and SaveAround coupon books may be in cash or check.
- All checks must be made payable to the Girl Scout troop. *Please only take checks from people you know and trust.*
- Any returned check fees are not reimbursable by GSSEF.
- All online orders are paid with a credit card and the sale is credited to the troop.

Check out all the *elephantastic* rewards your Girl Scout can earn!

MY PERSONAL SALES GOAL IS:

REWARDS*

- \$100+ Total Sales**
100+ Patch
- \$200+ Total Sales**
Die Cut Stickers
- \$275+ Total Sales**
Embrace Possibility Necklace
- \$325+ Total Sales**
Goal Getter Patch
- \$375+ Total Sales**
Small Elephant Plush
- \$500+ Total Sales**
LED Scrunchie & Tassel Keychain
- \$675+ Total Sales**
Embrace Possibility T-Shirt AND Postcard Set
- \$825+ Total Sales**
Portable Outdoor Mat
- \$1000+ Total Sales**
Black Notebook with Gel Pens AND Large Elephant Plush
- \$1350+ Total Sales**
\$75 Target Gift Card OR \$75 American Eagle Gift Card AND Coloring Pillowcase
- \$1750+ Total Sales**
\$250 Universal Gift Card OR \$250 Disney Gift Card

Online Only

- Send 30+ emails and \$1,250+ online only sales.
- Earn online patch & more!
- Get entered into a drawing for a Giant Elephant plush.

Service Unit Top Sellers
The top 3 sellers of each GSSEF Service Unit will receive a \$100 GSSEF Gift Card!

Council Top Sellers
The top 3 sellers of GSSEF will receive a Giant Elephant Plush!

*All rewards are based on individual girl sales. All rewards are cumulative. GSSEF reserves the right to substitute rewards on this card based on availability. Girls whose troop has opted out of rewards will still earn all patches.

The Sweets & Treats Program helps you learn these 5 skills:

- Goal Setting
- Decision Making
- Money Management
- People Skills
- Business Ethics

IMPORTANT: Adults must supervise and guide the Sweets & Treats Program of all Girl Scouts.



• COMMUNITY CARE TO SHARE •

The Community Care to Share Program is a great way for customers to give back to the community! Girls collect \$25 donations and then package and deliver the products to the chosen community hero. Girls can add thank you notes or personal messages to make the packages even more special. Each donation is credited to the girl's sales and the troop receives \$4.00 in troop proceeds per donation sold. Girls earn the Care to Share patch by receiving two or more \$25 donations. Our council's goal is for troops to deliver **1,500 care packages** to Community Heroes!



Want to earn an extra \$.05 per box during the 2025 Cookie Sale Program?

Participating in the Sweets & Treats Program will empower your girls, giving you and your troop the tools to have fun while learning and earning. **Embrace Possibilities** and achieve your goals.

Here's how to have an elephantastic season:

- Ensure at least 50% of the girls in your troop registered for MY25 are participating in the Sweets & Treats Program.
 - Achieve a per girl average (PGA) of 32 units sold.
- Meet both requirements and your troop will earn an additional \$.05 per box of cookies sold during the 2025 Cookie Sale Program.

All units count—magazines and more, coupon books, online nuts and candy, girl delivered items and Community Care to Share packages. **EVERY SALE** gets you closer to an increase in cookie proceeds!

All rewards are based on individual girl sales. All rewards are cumulative. GSSEF reserves the right to substitute rewards on the card based on availability. Girls whose troop has opted out of rewards will still receive all of the patches they earned.

2024 Sweets & Treats Program Permission Form



*Please read this form and fill out the permission form online.
No product will be distributed until this permission form has been completed.*

The purpose of the Sweets & Treats Program is to teach girls to work as a team, set goals and strive to achieve them, handle and account for money, and develop sales and marketing skills. The money earned supports troop activities and other program services and opportunities throughout Girl Scouts of Southeast Florida, following the policies established in our council's Member and Volunteer Policies document. This document can be found at www.gssef.org.

Girl Scouts can participate in the 2024 Sweets & Treats Program in several ways as described in the Family Guide including online nut and candy, online magazine and more, paper order card nut and candy, Community Care to Share package, and SaveAround coupon book sales. **Please review the information below, before completing the online permission form:**

- I understand that the girls are encouraged to participate in the online and in-person order process starting on August 28, 2024.
- I understand that I must provide adult supervision of my girl's participation in the Sweets & Treats Program at all times.
- I understand that items for sale during the Sweets & Treats Program may not be advertised or sold through online auction or sale websites such as eBay, Craigslist, Facebook marketplace or other sites of this nature.
- I agree to follow all safety procedures as explained by my Girl Scout's Troop Leader or other representative. This includes sales conducted both in-person and online. For details, please refer to Safety Activity Checkpoints which can be found at www.gssef.org.
- I have reviewed and agree to follow the money handling instructions as outlined in the Family Guide.
- I agree to accept financial responsibility for all nuts and candy, magazine and more, care package, and coupon book orders, and money my Girl Scout receives.
- I agree to assist her in making prompt deliveries and collecting payments for the nuts and candy, care packages, and coupon books.
- I understand that money collected for Sweets & Treats belongs to Girl Scouts of Southeast Florida. In the event of non-payment for Sweets & Treats items, I understand that Girl Scouts of Southeast Florida reserves the right to initiate collection procedures by its designated agent on delinquent funds.
- I understand that all rewards shown on the Rewards Card are based on an individual girl's sale as recorded until October 15, 2024.
- I understand that Sweets & Treats items received **MAY NOT** be returned to the Troop or Council.
- I understand that reward items are subject to substitution based on availability.

Please scan the QR code to fill out the online permission form.

Parents/Guardians are required to complete this step to participate in the Sweets & Treats Program.

