

A

Silver Swirling Snow Tin
Peppermint Bark Rounds

White milk chocolate with crushed peppermint candy on top of dark chocolate.
8 oz.

B

Golden Winter Sky Tin
Chocolatey Covered Pretzels

Pretzels covered in a chocolate coating.
6.5 oz.

C

Signature Chocolate
Covered Almonds

Almonds smothered in milk chocolate.
9 oz.

D

Praline
Pecans

Pecan halves are candied with a sweet and crunchy coating.
8 oz.

E

Holiday Mix

Roasted peanuts and almonds mixed with candy coated pretzel balls, milk chocolate caramel balls, yogurt cranberries, and mini nonpareils.
10 oz.

F

Whole
Cashews

Gourmet cashews roasted and lightly salted.
8 oz.

G

Black Pepper and Sea Salt
Cashew Halves

Cashews seasoned with a blend of sea salt, black pepper and spices.
8 oz.

H

Peanut Butter
Dark Chocolate Delight

Roasted and salted peanuts, butter toffee peanuts, peanut butter gems, and dark chocolate chunks.
9 oz.

I

Sweet & Smoky
Almonds

Almonds are seasoned with sweet honey and smoky seasoning.
8 oz.

J

Pecan Caramel
Supremes

Caramel and pecans covered in milk chocolate.
5 oz. Gift Box

K

Dark Chocolate
Sea Salt Caramels

Caramel enrobed in dark chocolate with sea salt.
6 oz. Gift Box

L

English Butter
Toffee

Butter toffee covered in a chocolate flavored coating and topped with crushed almonds.
5 oz. Gift Box

M

Mini Gummi
Butterflies

Fresh fruit flavor and a soft texture.
12oz.

N

Cranberry Trail Mix

Cranberries, raisins, almonds, cashews, English walnuts, and banana chips.
7 oz.

O

Peanut Butter
Elephants

Peanut butter covered with chocolate.
5.1 oz. Gift Box

P

Spicy Cajun Mix

BBQ peanuts, hot Cajun corn sticks, mini sesame chips, taco and hot Cajun sesame sticks.
7 oz.

Q

Care to Share

\$25.00

Show your appreciation!

Your \$25 donation will provide a care package* to our local Community Heroes. No product selection required. Help us reach our council's goal of 1,500 packages!

*Care package is made up of Taco Peanuts, Dulce Daisies, & Fruit Slices

• COMMUNITY CARE TO SHARE •

Shop Online

Please visit my storefront www.gsnutsandmags.com/store to purchase all of your favorite items. Enter my code _____ so I can get credit.

40 oz Pretzel Party Mix*

10 oz Confetti Mix*

10 oz Sea Salt
Caramel Cashews*

16 oz Super Giant Cashews*

16 oz Holiday Medley*

*Packaging artwork for online orders may vary.

My first name is: _____

Our troop goal is: _____

My personal goal is: _____

	Name	Phone or Email	Silver Swirling Snow Tin Peppermint Bark Rounds	Golden Winter Sky Tin Chocolatey Covered Pretzels	Signature Chocolate Covered Almonds	Praline Pecans	Holiday Mix	Whole Cashews	Black Pepper & Sea Salt Cashew Halves	Peanut Butter Dark Chocolate Delight	Sweet & Smoky Almonds	Pecan Caramel Supremes	Dark Chocolate Sea Salt Caramels	English Butter Toffee	Mini Gummi Butterflies	Cranberry Trail Mix	Peanut Butter Elephants	Spicy Cajun Mix	Care to Share	Number of Items	Amount Due	Amount Paid
			A	B	C	D	E	F	G	H	I	J	K	L	M	N	O	P	Q			
1																						
2																						
3																						
4																						
5																						
6																						
7																						
8																						
9																						
10																						
11																						
12																						
13																						
14																						
15																						
16																						
17																						
18																						
19																						
20																						
21																						
22																						
23																						
24																						
Total Number of Items																						
Item Cost			\$15	\$14	\$12	\$12	\$12	\$11	\$11	\$11	\$11	\$10	\$10	\$10	\$9	\$9	\$9	\$9	\$25			
Total Dollar Amount Sold																						

If you haven't already created your online account, please go to www.gsnutsandmags.com/gssef. You will be able to enter your order card items there once your account is launched. Any orders for girl delivered items placed online by your customers will be automatically added to your sales totals.

girlscouts

— Denotes Kosher

Girl Scout Sweets & Treats Program

Girl Scouts is a place where every participant has the space and support she needs to reach her full potential and accomplish amazing things. A lifetime of leadership, success, and adventure starts here.

The Girl Scouts® name, mark, and all associated trademarks and logos, including the Trefoil Design, are owned by Girl Scouts of the USA. Trophy Nut Company is an official GSUSA licensee.

MY PERSONAL SALES GOAL IS: _____

REWARDS*



\$150+
Total Sales



Pom Pom
Keychain

\$225+
Total Sales



Die Cut
Stickers

\$300+
Total Sales



BFF
Necklaces

\$400+
Total Sales



Goal Getter Patch
& Small Grizzly Plush

\$525+
Total Sales



BFF Journal

\$675+
Total Sales



Brave, Fierce
Fun! T-Shirt

AND



Flower
Hair Clips

\$850+
Total Sales



Mini Canvas
Travel Bag

\$1050+
Total Sales



Mini
Scratch Notes

AND



Large Grizzly
Plush

\$1350+
Total Sales



\$75 Target
Gift Card

OR



\$75 Aerie/American
Eagle Gift Card

AND



Mini Camp LED Light

\$1750+
Total Sales



\$250 Universal
Gift Card

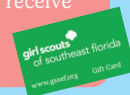
OR



\$250 Disney
Gift Card

Service Unit Top Sellers

The top seller from each
Service Unit will receive
a \$100 GSSEF
Gift Card!



Council Top Sellers

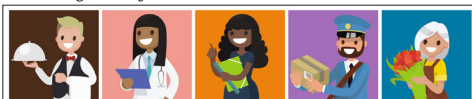
The top 3 sellers council-wide
will receive a Giant Grizzly Plush

*All rewards are based on individual girl sales. All rewards are cumulative. GSSEF reserves the right to substitute rewards on this card based on availability. Girls whose troop has opted out of rewards will still earn all patches.

The Sweets & Treats Program helps you learn these 5 skills:

- Goal Setting
- Decision Making
- Money Management
- People Skills
- Business Ethics

IMPORTANT: Adults must supervise
and guide the Sweets & Treats
Program of all Girl Scouts.



• COMMUNITY CARE TO SHARE •

The Community Care to Share Program is a great way for customers to give back to the community! Girls collect \$25 donations and then package and deliver the products to the chosen community hero. Girls can add thank you notes or personal messages to make the packages even more special. Each donation is credited to the girl's sales and the troop receives \$4.00 in troop proceeds per donation sold. Girls earn the Care to Share patch by receiving two or more \$25 donations. Our council's goal is for troops to deliver **1,500 care packages** to Community Heroes!



5+ Magazines
and more



30+ Nut/Candy Items



\$400+ Total Sales

3+ Magazines
and more



15+ Nut/Candy
Items

20+ Emails Sent



\$450+ Total Sales
AND 20+ Emails



Earn the Sweets & Treats Avatar
Patch AND sell 450+ boxes of
cookies in 2026.



24+ Paper Order Card Items



2+ Care Packages



AND

Want to earn an extra \$.05 per box during the 2026 Cookie Sale Program?

Participating in the Sweets & Treats Program will empower your girls, giving you and your troop the tools to have fun while learning and earning. **Be Brave, Fierce, Fun** and achieve your goals.

Here's how to have an un-bear-lievable season:

- Ensure at least 60% of the girls in your troop registered for MY26 are participating in the Sweets & Treats Program.
- Each participating Girl Scout must send at least 20 emails through her site.
- Each participating Girl Scout must sell at least 15 items.

Meet all three requirements and your troop will earn an additional \$.05 per box of cookies sold during the 2026 Cookie Sale Program.

All items count—magazines
and more, online nuts and
candy, girl delivered items
and Community Care to
Share packages. EVERY
SALE gets you closer to an
increase in cookie proceeds!

