



## Mechanical Engineering: Board Game

## Badge Overview

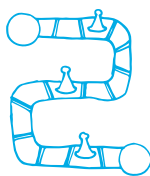
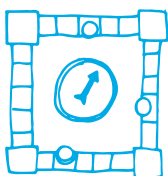
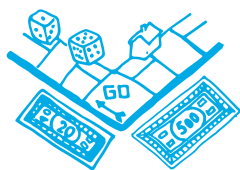
Create board games and engineer your own game spinner. When you've earned this badge, you'll have created your own board game and learned what inventors and engineers do.

### Badge Components

#### 1. Come up with an idea for your board game

Choose what type of game you want to make. Decide what kind of board game you want to build.

- Do you have a favorite game? Do you have any games at home you can use for inspiration?



Make a plan! Make a beautiful drawing of your board and the playing pieces. Think about:

- How the game will be played, what are the rules?
- How many players will there be?
- How will you know how many spaces to move, are there going to be any special squares like moving 2 spaces forward or having to go back to the start?

#### 2. Design a spinner for your game

Here are some ideas for making your spinner:



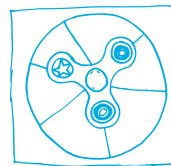
spinning a paperclip with the tip of a pen



cardboard, bolt and screw



corkboard, thumbtack, and paperclip



using a fidget spinner

- Or you can watch this [video](#) for instructions if you prefer.

Time to make your game board, the player pieces and the spinner or dice. Using cardboard or paper found around your house you can design your board using pens, pencils, markers, and paint. You could even use glitter!

#### 3. Test your game and make it better

Invite someone in your house to play the game with you. What do you need to change to make your game the best it can be!

### Materials

- Paper or card
- Markers, crayons or paint
- Paper clips

### Florida Educational Standards

The content of all Girl Scout national proficiency Badges and Journeys have been correlated by grade level to national and state learning objectives.

**Click here** for more information on how Girl Scout Badge-work supports Florida's educational standards.

We love to see Girl Scouts in action. Snap a photo and send it to [marcomm@gssef.org](mailto:marcomm@gssef.org).

Include her name, troop# and the name of the badge she's working on and we'll feature her.

Finished with your badge? Now buy it for your Girl Scout Uniform. Order online at <https://www.girlscoutshop.com/SOUTHEAST-FLORIDA-COUNCIL> and we'll ship it for free.

Questions? Contact [customercare@gssef.org](mailto:customercare@gssef.org)

